

UPMC

UPMC Cancer Pavilion
5150 Centre Avenue
Pittsburgh, PA 15232

T R C ³ 2 0 1 1

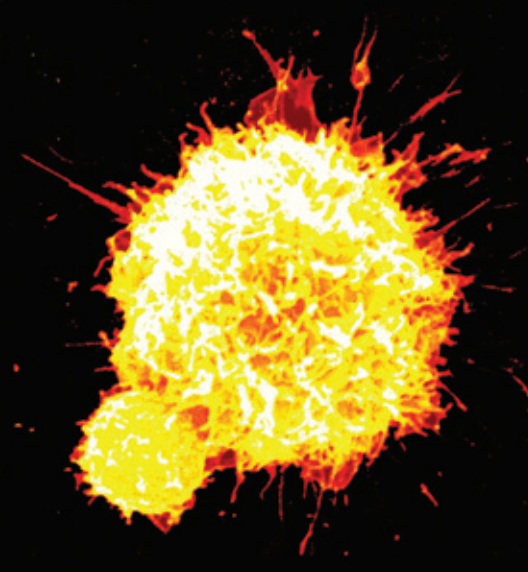
14th Annual Meeting of the
**Translational Research
Cancer Centers Consortium**

February 24-26, 2011

Seven Springs Mountain Resort
Seven Springs, Pennsylvania

For more information go to our Web site:

www.upci.upmc.edu/trc3-2011



T R C ³ 2 0 1 1

14th Annual Meeting of the
**Translational
Research
Cancer Centers
Consortium**

Seven Springs Mountain Resort
Seven Springs, Pennsylvania

UPMC

sponsored by
UPMC Cancer Centers
and
University of Pittsburgh
School of Medicine
Center for Continuing Education
in the Health Sciences

Organizers

Pawel Kalinski, MD, PhD
Michael T. Lotze, MD
Markus Mapara, MD, PhD
Hideho Okada, MD, PhD

Keynote Lecture

**"Regulation of Anti-tumor
Immunity at the
Level of the Tumor Microenvironment"**

Thomas F. Gajewski, MD, PhD
University of Chicago
Chicago, Illinois

February 24-26, 2011

Collaborating Institutions

Abramson Cancer Center at the University of Pennsylvania

Barbara Ann Karmanos Cancer Institute at Wayne State University

Case Comprehensive Cancer Center

James P. Wilmot Cancer Center at the University of Rochester

Mary Babb Randolph Cancer Center at West Virginia University

The Ohio State University Comprehensive Cancer Center

Penn State Cancer Institute

Roswell Park Cancer Institute

University of Pittsburgh Cancer Institute

Meeting Location

The conference will be held at **Seven Springs Mountain Resort, Seven Springs, PA.**

(See page 15 for details).

Goal

To gain a greater understanding of the interactions between the immune system and cancer in the setting of biologic therapy of cancer.

Specific Objectives

- To review the latest progress in the area of immune-based therapies of cancer (vaccines, adoptive T cell therapies, NK cells, cytokines, antibodies, adjuvants).
- To understand the role of multi-cellular interactions in the development of effective anticancer immunity or its failure.
- To identify relevant combinatorial approaches likely to result in therapeutic synergy.
- To identify the areas of preclinical and clinical collaborations in the development and evaluation of novel strategies of biologic therapy of cancer between the consortium members and outside partners.

Who Should Attend

Preclinical and clinical investigators from regional cancer centers, health care professionals, trainees and students who are interested in translational research.

Continuing Education Credit

The University of Pittsburgh School of Medicine is accredited by the Accreditation Council for Continuing Medical Education to provide continuing medical education for physicians.

The University of Pittsburgh School of Medicine designates this educational activity for a maximum of **19.0** Category 1 Credits.™ Each physician should claim only credit commensurate with the extent of their participation in the activity.

Other health care professionals are awarded **1.90** continuing education units (CEUs) which are equal to **19.0** contact hours.

Call for Abstracts

Abstract submissions should be forwarded using our online website at www.upci.upmc.edu/trc3-2011. The deadline for submission is **January 10, 2011**.

Schedule – Thursday, February 24, 2011

- 9:00 am – Registration
1:00 pm
- 10:00 am **Breakaway PO1 and SPORE Reviews** (including working lunch at noon)
Participating Programs: Carl June, MD, Olivera Finn, PhD, Pawel Kalinski, MD, PhD, and Elizabeth Repasky, PhD
- Noon Working Lunch
- 2:45 pm Break
- Breakaway PO1 and SPORE Reviews (continued)**
- 3:00 pm **Inter-program PO1/SPORE Meeting:
Immunotherapy Trials @ Member Sites**
- 5:00 pm **Welcome Address and Program Overview**
Nancy Davidson, MD and Pawel Kalinski, MD, PhD
- 5:15 pm **Keynote Address:**
**Regulation of Anti-tumor Immunity at the Level of Tumor
Microenvironment**
Thomas F. Gajewski, MD, PhD
- 6:00 pm **Update from the NIH**
William Merritt, MD, PhD
- 6:45 pm Thursday Adjournment
- 7:00 pm – Welcome Reception and Light Bites*
9:00 pm

*Group packages available for the Night Skiing Session: Spa, Bowling, Pool, other activities

Schedule – Friday, February 25, 2011

- 7:00 am Breakfast
- 7:55 am Welcome and Program Overview
- Session 1: Adoptive T Cell Therapies**
Co-Chairs: Carl June, MD and Lawrence Lum, MD, DSc
- 8:00 am **Adoptive T Cell Transfer with Lentiviral Engineered CARs**
Carl June, MD and Bruce Levine, PhD
- 8:25 am **Adoptive Transfer of T Cells Armed with Bispecific Antibodies**
Lawrence Lum, MD, DSc
- 8:50 am **Adoptive Therapy in the Setting of Non-myeloablative BMT**
Daniel Fowler, PhD
- 9:05 am **Selected Abstract Presentations**
- 9:35 am Break (coffee available in the lobby)
- Session 2: Dendritic Cells and Vaccines**
Co-Chairs: Pawel Kalinski, MD, PhD and Hideho Okada, MD, PhD
- 9:45 am **Dendritic Cells in Immunotherapy of Established Cancer:
Directing Effector T Cells to Tumors**
Pawel Kalinski, MD, PhD
- 10:10 am **Type-1 Polarized Glioma Vaccines**
Hideho Okada, MD, PhD
- 10:35 am **Potentiating Cancer Immunotherapy Using Oncolytic Vaccines**
Yonghong Wang, PhD
- 10:55 am **Selected Abstract Presentations**
- 11:20 am Break (coffee available in the lobby)
- Session 3: NK Cells and Inflammation**
Co-Chairs: Michael T. Lotze, MD and Thomas Loughran, MD
- 11:30 am **NK Cells and Autophagy: Driving Tumor Immunity**
Michael T. Lotze, MD

11:55 am **Dysregulated Sphingolipid Metabolism in LGL Leukemia**
Thomas Loughran, MD

12:20 pm **CD24 in Discriminating DAMPs and PAMPs in Cancer Biology**
Yang Liu, PhD

12:45 pm **Selected Abstract Presentations**

1:05 pm Lunch and Poster/Exhibit Viewing

Session 4: Tumor Microenvironment
Co-Chairs: Laura Gibson, PhD and Elizabeth Repasky, PhD

2:00 pm **Vitamin D and Cancer: The Continuing Story**
Candace Johnson, MD, PhD

2:20 pm **Genetic Analysis of the Breast Tumor Microenvironment:
Pten and Ets2 Move into the Neighborhood**
Michael Ostrowski, PhD

2:40 pm **Combinational Immunotherapy Targeting the Tumor Vasculature**
Walter J. Storkus, PhD

3:00 pm **Attenuation of TGFbeta Signaling in Cancer Cells:
The MicroRNA Connection**
Andrei Thomas-Tikhonenko, PhD

3:15 pm **Selected Abstract Presentation**

3:25 pm Adjournment of Friday CME Session

3:25 pm Coffee Break

**(Non-CME) Session 5: Emerging Technologies, Antibodies,
Cytokines and Small Molecules**
Co-Chairs: William Petros, PharmD and Gregory Lesinski, PhD

3:45 pm **6-BT, a Novel Myeloid Leukemia Differentiation Inducer Targeting
Malignant Glioblastoma Stem Cells**
William Tse, MD

4:10 pm **Post-translational Enzymes: Novel Therapeutic Targets in Melanoma**
Courtney Nicholas, MS

4:35 pm **Selected Abstract / Biotech / Pharma Presentations**

5:20 pm Adjournment of Friday Non-CME Session

5:20 pm Break (coffee available in the lobby)

5:30 pm Poster and Exhibits over Light Bites

7:00 pm – **Free Time/TRC3 Ski Cup/TRC3 Bowling Cup***

10:00 pm

10:00 pm **Night Cap: Science in the Dark**

* Group Tickets Available for the Night Skiing Session

Schedule – Saturday, February 26, 2011

7:00 am Breakfast and Drawing of Vendors Award

8:00 am **Best Poster Awards and Presentations I: Selected Basic Science Posters**
Chairs: Pawel Kalinski, MD, PhD & Michael T. Lotze, MD

8:30 am **Best Poster Awards and Presentations II: Selected Translational Science Posters**
Chairs: Markus Mapara, MD, PhD and Hideho Okada, MD, PhD

9:00 am – **Disease-Specific Parallel Sessions**
Noon (One-hour-long sessions: 4–6 presentations per session; depending on the numbers of submitted abstracts in each category)

- **Breast Cancer**
Co-Chairs: Joseph Baar, MD, PhD and Wei-Zen Wei, PhD
 - HER-2 in Feline Mammary Tumor
Wei-Zen Wei, PhD
 - Selected Poster Presentations
- **Hematologic Malignancies**
Co-Chairs: Kelvin Lee, MD and Markus Mapara, MD, PhD
 - TAT1 and Tregs in GVHD
Markus Mapara, MD, PhD
 - Selected Poster Presentations
- **Gastrointestinal Malignancies**
Co-Chairs: David L. Bartlett, MD and Gregory Beatty, MD
 - Targeting CD40 in Pancreatic Cancer
Gregory Beatty, MD
 - Selected Poster Presentations

■ Gynecologic Cancers

*Co-Chairs: George Coukos, MD, PhD, Robert Edwards, MD and
Kunle Odunsi, MD, PhD*

- Whole Tumor Antigen Approaches to Ovarian Cancer Immunotherapy
George Coukos, MD, PhD
- Ovarian Cancer Vaccines as Adjuvant Therapy
Robert Edwards, MD
- Preclinical Testing of MUC1 Vaccines in Triple Transgenic
Mice with Ovarian Tumors
Anad Vlad, MD, PhD
- Selected Poster Presentations

■ Urologic Malignancies

Co-Chairs: Gurkamal Chatta, MD and Thomas Schwaab, MD, PhD

- Immunotherapy of Urologic Malignancies
Thomas Schwaab, MD, PhD
- Selected Poster Presentations

■ Brain Cancer

Co-Chairs: Hideho Okada, MD, PhD and Balveen Kaur, PhD

- Immunotherapy of Recurrent Gliomas
Hideho Okada, MD, PhD
- The Role of Tumor Micro-environment in Efficacy of Oncolytic Viral
Therapy for Brain Tumors
Balveen Kaur, PhD
- Selected Poster Presentations

Additional disease-specific parallel sessions (independent or
merged with the above sessions, depending on numbers of abstracts
submitted in each category):

- Skin Cancer (4–6 Abstract presentations)
- Lung Cancer (4–6 Abstract presentations)
- Head and Neck Cancer (4–6 Abstract presentations)

Noon **Plenary Session 12: Emerging Topics and Plans for the 2012 Meeting**

12:30 pm **Conference Adjournment**

Organizers

Pawel Kalinski, MD, PhD

Professor of Surgery and Immunology
University of Pittsburgh Cancer Institute

Michael T. Lotze, MD

Professor of Surgery and Bioengineering
University of Pittsburgh Cancer Institute

Markus Mapara, MD, PhD

Associate Professor of Medicine
University of Pittsburgh Cancer Institute

Hideho Okada, MD, PhD

Associate Professor of Neurological Surgery
University of Pittsburgh Cancer Institute

Planning Committee

Joseph Baar, MD, PhD
William Carson III, MD
George Coukos, MD, PhD
Carl June, MD
Kelvin Lee, MD
Greg Lesinski, PhD
Thomas Loughran, MD
Lawrence Lum, MD, DSc
Natarajan Muthusamy, DVM, PhD
Kunle Odunsi, MD, PhD
William Petros, PharmD, FCCP
Gregory Plautz, MD
Elizabeth Repasky, PhD
Pierre Triozzi, MD
William Tse, MD
Robert Vonderheide, MD, DPhil
Wei-Zen Wei, PhD

Faculty

Faculty are affiliated with the University of Pittsburgh School of Medicine, Pittsburgh, Pennsylvania, unless noted otherwise.

In accordance with Accreditation Council for Continuing Medical Education requirements on disclosure, information about relationships of presenters with commercial interests (if any) will be included in materials distributed at the time of the conference.

Joseph Baar, MD, PhD

Associate Professor of Medicine
Case Comprehensive Cancer Center
Cleveland, OH

David L. Bartlett, MD

Professor of Surgery
University of Pittsburgh Cancer Institute

Gregory Beatty, MD

Professor of Surgery
University of Pennsylvania
Philadelphia, PA

Gurkamal Chatta, MD

Associate Professor of Medicine
University of Pittsburgh Cancer Institute

George Coukos, MD, PhD

Celso Ramon Garcia Professor in
Obstetrics & Gynecology
Director, Ovarian Cancer Research Center
Associate Chief, Gynecologic Oncology
University of Pennsylvania
Philadelphia, PA

Nancy Davidson, MD

Director
University of Pittsburgh Cancer Institute

Robert Edwards, MD

Professor of Obstetrics, Gynecology and
Women's Health
University of Pittsburgh Cancer Institute

Olivera Finn, PhD

Professor of Immunology
University of Pittsburgh Cancer Institute

Daniel Fowler, MD

Clinical Investigator
National Cancer Institute
Bethesda, MD

Thomas F. Gajewski, MD, PhD

Professor, Departments of Pathology
and Medicine
University of Chicago
Chicago, IL

Laura Gibson, PhD

Professor, Departments of Microbiology,
Immunology and Cell Biology
West Virginia University
Morgantown, WV

Candace Johnson, PhD

Chair, Pharmacology and Therapeutics
Wallace Chair in Translation Research
Roswell Park Cancer Institute
Buffalo, NY

Carl June, MD

Professor of Medicine
University of Pennsylvania
Philadelphia, PA

Balveen Kaur, PhD

Associate Professor of Neurological Surgery
Ohio State University
Columbus, OH

Kelvin Lee, MD

Professor of Medicine
Roswell Park Cancer Institute
Buffalo, NY

Gregory Lesinski, PhD

Assistant Professor of Medicine
Ohio State University
Columbus, OH

Bruce Levine, PhD

Research Associate Professor of Pathology
And Laboratory Medicine
University of Pennsylvania
Philadelphia, PA

Yang Liu, PhD

Assistant Professor
Department of Medicine
Division of Gastroenterology, Hepatology
and Nutrition

Thomas Loughran, MD

Professor of Medicine
Director of Penn State Cancer Institute
Hershey Medical Center
Pennsylvania State University
Philadelphia, PA

Lawrence Lum, MD, DSc

Professor of Medicine, Immunology
and Microbiology
Scientific Director of Immunotherapy
and BMT
Karmanos Medical Center
Detroit, MI

William Merritt, PhD

Division of Cancer Treatment and Diagnosis,
Cancer Therapy and Evaluation Program
National Cancer Institute
Bethesda, MD

Courtney Nicholas, MS

Ohio State University
Columbus, OH

Kunle Odunsi, MD, PhD

Professor of Gynecologic Oncology
Roswell Park Cancer Institute
Buffalo, NY

Michael Ostrowski, PhD

Professor and Chair, Molecular & Cellular
BiochemistryThe Ohio State University,
Medical Center
Columbus, OH

William Petros, PharmD

Professor and Mylan Chair of Pharmacology
West Virginia University
Morgantown, WV

Elizabeth Repasky, PhD

Professor of Immunology
Roswell Park Cancer Institute
Buffalo, NY

Thomas Schwaab, MD, PhD

Assistant Professor of Urology
and Immunology
Roswell Park Cancer Institute
Buffalo, NY

Walter J. Storkus, PhD

Professor of Dermatology and Immunology

Andrei Thomas-Tikhonenko, PhD

Associate Professor of Pathology and
Laboratory Medicine
Chair, Cancer Biology Graduate Program
University of Pennsylvania
Chief, Division of Cancer Pathobiology
The Children's Hospital of Philadelphia
Philadelphia, PA

William Tse, MD

Associate Professor of Medicine
West Virginia University
Morgantown, WV

Anda Vlad, MD, PhD

Assistant Professor of Obstetrics, Gynecology
and Reproductive Sciences
Magee-Womens Research Institute
Pittsburgh, PA

Yonghong Wan, PhD

Associate Professor of Pathology and
Molecular Medicine
McMaster University
Hamilton, Ontario, Canada

Wei-Zen Wei, PhD

Professor of Immunology and Microbiology
Karmanos Medical Center
Detroit, MI

Registration Information

Pre-registrations (due by February 18, 2011)

All pre-registrations are due one week prior to the beginning of the conference. Registrations after this date are accepted only as on-site registrations.

Registering online is the quickest and easiest way to reserve your space at CCEHS conferences.

1. Visit our online registration site at <https://ccehs.upmc.com/formalCourses.jsp>
2. Click the Registration button and enter all the requested information (including an email address) and follow the prompts to submit your registration after entering your payment information.
3. Print the automatic electronic registration confirmation email sent to the email address you provided us when you registered. If you do not receive this confirmation, please contact us at (412) 623-0306.

Paper Registrations by Fax or Mail (see contact information below)

If you are unable to register online please submit a request for paper form. UPMC employees whose registration fee will be remitted via journal transfer must request the paper registration form. For a paper registration form, please contact us at (412) 623-0306.

A confirmation letter will be faxed or mailed if registration is completed through the mail or fax by the pre-registration deadline. If you register online, you will receive an immediate e-mail confirmation message.

Please note: Registration is not complete until you receive this confirmation. If you do not receive this letter within 5-7 days of registration, please contact us at (412) 623-0306.

You must bring this confirmation letter with you to the conference.

Cancellation

All cancellations must be in writing and sent to us via U.S. mail, e-mail or fax. Tuition for cancellations postmarked or date stamped before **February 10, 2011** will be completely refunded. After **February 11, 2011** a \$35 administrative fee will be assessed. No refunds will be made after **February 18, 2011**.

Conference contact for cancellation requests:

Sharon Couth

Hillman Cancer Pavilion, Suite 1.46

5117 Centre Avenue, Pittsburgh, PA 15213

Email: couthsl@upmc.edu • Fax: (412) 623-7709

The UPMC Center for Continuing Education in the Health Sciences reserves the right to cancel this program if sufficient registrations are not received. In the case of cancellation, the department will fully refund registration fees. However, other costs incurred by the registrant, such as airline or hotel penalties, are the responsibility of the registrant.

Registration Fee

\$100 Regular

\$50 Students, Fellows, Residents

Registration fee includes:

- Continuing education credit
- Registration and course materials
- Continental breakfast, lunch and conference break refreshments

For additional information, contact:

Sharon Couth

Telephone: (412) 623-0306

Email: couthsl@upmc.edu

Special Needs



Participation by all individuals is encouraged. Advance notification of any special needs will help us provide better service. Please notify us of your needs at least two weeks in advance of the program by calling Sharon Couth at (412) 623-0306.

Visit the Center for Continuing Education in the Health Sciences Web Site

Our Internet address is: <https://ccehs.upmc.com>

The UPMC Center for Continuing Education in the Health Sciences invites you to visit our web location. Receive information on CME programs, earn CME credits on the Internet, and access information about our formal courses and much more. Discover who we are and how you can contact us. Please visit our web location often to get updated information on upcoming programs.

The University of Pittsburgh, as an educational institution and as an employer, values equality of opportunity, human dignity, and racial/ethnic and cultural diversity. Accordingly, the University prohibits and will not engage in discrimination or harassment on the basis of race, color, religion, national origin, ancestry, sex, age, marital status, familial status, sexual orientation, disability, or status as a disabled veteran or a veteran of the Vietnam era. Further, the University will continue to take affirmative steps to support and advance these values consistent with the University's mission. This policy applies to admissions, employment, access to and treatment in University programs and activities. This is a commitment made by the University and is in accordance with federal, state, and/or local laws and regulations. For information on University equal opportunity and affirmative action programs and complaint/grievance procedures, please contact: William A. Savage, Assistant to the Chancellor and Director of Affirmative Action (and Title IX and 504 Coordinator), Office of Affirmative Action, 901 William Pitt Union, University of Pittsburgh, Pittsburgh, PA 15260, (412) 648-7860.



Conference Location and Accommodations

Seven Springs Mountain Resort – Pennsylvania's largest ski area, Seven Springs, is located in the beautiful Laurel Highlands. The resort includes the finest skiing, snowboarding and golf that Pennsylvania has to offer, the exhilaration of sporting clays, the ultimate in relaxation at the luxurious Trillium Spa, an indoor pool, a shopping gallery, and even a bowling alley. Group Ski Packages are available from the resort.

Seven Springs is located approximately one hour's drive southeast of Pittsburgh. It is easily accessible off exits 91 or 110 of the Pennsylvania Turnpike. Pittsburgh International Airport is the nearest metropolitan terminal. Pickup from this airport is available by prior arrangement.

Reservations

To make reservations or for further information go to our website:

www.upci.upmc.edu/trc3-2011